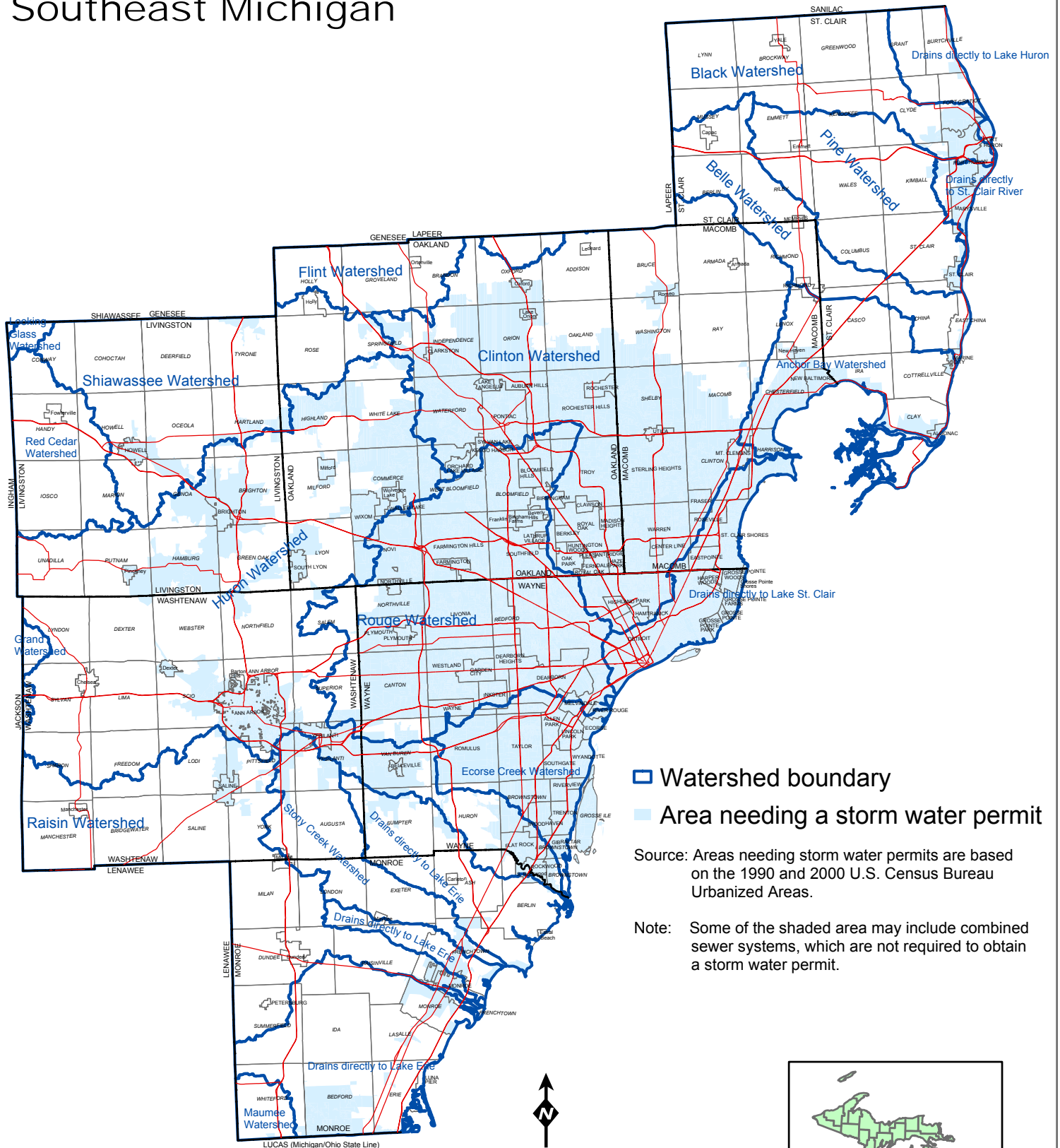


Areas Needing a Storm Water Permit Southeast Michigan



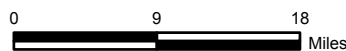
- Watershed boundary
- Area needing a storm water permit

Source: Areas needing storm water permits are based on the 1990 and 2000 U.S. Census Bureau Urbanized Areas.

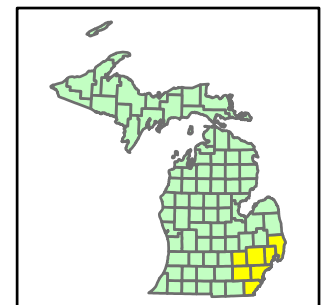
Note: Some of the shaded area may include combined sewer systems, which are not required to obtain a storm water permit.



1:800000



State Plane NAD83
February 2003



SEMCOG

Southeast Michigan Council of Governments
535 Griswold Street, Suite 300, Detroit, Michigan 48226-3602
Phone (313) 961-4266, Fax (313) 961-4869
www.semco.org

Copyright: SEMCOG, 2003

o:\GIS\StaticMaps\AreasNeedingSWPermit.mxd