

MSU Extension
Livingston County
2300 East Grand River Avenue, Suite 111
Howell, MI 48843 (517) 546-3950

The 4-H



Corner Post

October-November

Newsletter for 4-H Families

2008



Leaders please be sure to share this newsletter with your members.
Members may also get the newsletter from the website at www.co.livingston.mi.us/msuextension



Mandatory 4-H 2008-2009 Re-Enrollment

November 3, 2008 9 a.m. to 7:30 p.m.

Re-enrollment Packets are now available for pick-up at the MSU Extension Office, located at the Livingston County East Complex (west entrance), 2300 East Grand River Avenue, Suite 111, Howell, Michigan 48843.

Plan to stop by anytime on November 3 and re-enroll your 4-H club for 2008-09. Administrative Leaders will be notified by post card. All Re-enrollment and Financial Statements are due November 3rd.

Packet Includes: Leader Re-enrollment Forms, Member Re-enrollment Forms, New Member Forms, New Leader Forms, and Club Financial Statement.

Large Animal-Small Animal General Meetings

The **Market Livestock Committee** will hold their large animal general meeting on October 7 at 7:30 p.m. The meeting will be held in our new meeting room in the County East Complex, 2300 East Grand River. If you have an interest in the Market Livestock Project Area you are welcome to attend. The general meeting is a great opportunity for parents, leaders and members to help the committee plan for the coming year. Election of committee adults and teens will take place during the meeting.

The **Small Animal Committee** will hold their small animal general meeting on October 8 at 7:30 p.m. The meeting will also be held in our new meeting room in the County East Complex, 2300 East Grand River. If you have an interest in the Small Animal Project Areas you are welcome to attend. The general meeting is a great opportunity for parents, leaders and members to help the committee plan for the coming year. Election of committee adults and teens will take place during the meeting.

Horse Judging

Horse Judging is scheduled to start in October. If you have youth who are interested in horses and would like to learn more about confirmation, why the judge picks what they do, how to pick the best horse for their barn, then horse judging is for them. Youth do not need any prior experience or even need to own a horse. Practices will run through April complete with farm visits, clinics and trips.

Teams are forming now; call Roxanne at 517-546-3950 to get signed up!



2009 Michigan Week Youth Photo Contest

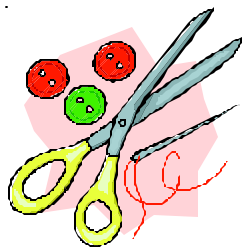
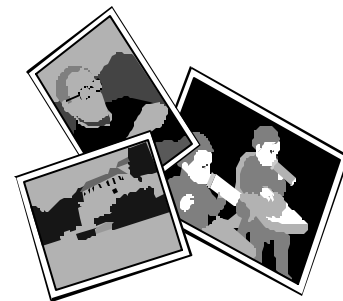
Youth invited to photograph Michigan historic sites

Get out your camera and photograph a favorite Michigan historic site while you still have lots of sun and foliage. A historic site can be a building (such as a firehouse, house or barn); a structure (such as a bridge); an area (such as neighborhood or fairgrounds); or an object (such as a monument) that is 50 yrs or older. All Michigan youth are invited to participate in the 2009 Michigan Week Youth Photo Contest. This is a prestigious youth photo contest sponsored by Michigan 4-H Youth Development, Michigan Department of History, Arts and Libraries and Michigan History for Kids Magazine.

Youth aged 9-19, as of January 1, 2009, are eligible to submit up to two photos of a historic site. These photos can be two different perspectives of one historic site or two different historic sites. The entry submission deadline is February 15, 2009.

The exhibit schedule is full with currently 20 plus exhibit sites which will display the submissions. Viewing locations through June, 2009 include:

- SW Region 4-H Leader meet - November 1, Kellogg Biological Station
- Hillsdale Library, November
- St. Mary's School (Leelanau County), December 3-31
- Macomb County 4-H Awards Banquet
- Clinton-Macomb Library, January 2009
- SE Region 4-H Leader meet, Frankenmuth, January 17
- Central Region 4-H Leader meet, Mt. Pleasant, February 6
- Gratiot County, February 7-28
- Michigan Barn Network Conference, MSU, March 13-14
- Charlevoix County March 15 - April 24
- Ontonagon County multiple sites, May, 2009
- MSU Museum and 4-H Exploration Days, June, 2009



From Drab to Fab!

Recycled Accessories Purse Class

Presented by the Clothing & Textile Committee

Saturday, November 15th, 1-5 pm

LESA Building, 1425 W. Grand River, Howell



Don't throw out those moth-eaten sweaters! You will be able to "make and take" a one-of-a-kind handbag using recycled wool. Bring a pair of scissors for cutting out your pattern pieces, and, if you would like to embellish your project, bring buttons, yarn, ribbon, beads, lace, etc...Sewing machines (provided) will be used for lining only, but bring your own if you prefer. Kit fee of \$12.00 will include sweater, pattern, sewing needles, some embellishments, lining material and yarn to complete the project. The class is open to 4-H leaders, adults and teens (13 and up, unless accompanied by an adult to assist on a joint project. Only 30 spots are available, so sign up NOW !!Sewing skill level: beginning hand sewing/machine sewing).

Webberville Feed



P u r i n a M i l l s

H o r s e H e a l t h F a i r

Date: October 29, 2008

Time: 6:00 – 8:00 pm

Place: Webberville Feed

421 S. Summit, Webberville



Speakers:

Dr. Amanda Ragon,
Equine Fertility Specialist
will speak on “Equine Reproductive health”

Tara Long,
Purina Mills Equine Nutritionist
will speak on “Top Ten Feed Myths”

Register today! Call 517-521-3082

How to Winterize Your Horse Saturday, October 11, 2008

Dr. Rob VanWessum, equine clinician at the MSU Veterinary Teaching Hospital, will speak on training horses in preparation for the winter layoff, Saturday, October 11, 2008 at 10 a.m. Dr. VanWessum will also address issues of winter riding and what do in order to prevent injuries during cold temperatures, and will also provide deworming and dietary advice.

The seminar will be held in E-100 Veterinary Medical Center, East Lansing, from 10 a.m.-1 p.m. Free admission. Please RSVP to Denise Bennington (517) 353-31782, beningde@cvm.msu.edu or Judy Lessard (517) 355-0001, lessardj@cvm.msu.edu. Refreshments will be served. The Center is located at the intersection of Wilson Road and Bogue Street on the MSU campus. Maps and directions can be found at <http://www.msu.edu/maps/index.html>.

Livingston County 4-H Officers Training December 1, 2008

7:00 pm - 9:00 pm
LESA Building
Highlander Way, Howell

Bring all your officers and receive a prize. Officers consist of President, Vice President, Secretary, Treasurer, and Reporter (optional). All officers who come to the training get the much needed 4-H bulletin for FREE to help them do their job. Any club needing those books after officers training will have to purchase them.

Free Pizza & pop for participants!

HELPFUL TIPS FOR LEADERS: Leaders are welcome to attend the sessions, and Roxanne suggests that you assign a leader to each breakout session to assist that member throughout the year with their job. Free additional handouts for all leaders who attend.

Fun Hands-on Learning

Gusty Acres Open Fun Show! October 25, 2008

The Gusty Acres 4-H Club is inviting all to attend - use this show as a practice for the upcoming events next year. This will give you an idea on what you need to work on over the winter months. Gusty Acres would like to see adults ride and compete as well; your children would love to see this too! This event is a fund raising event to help pay for stalls and needed club money.

Proof of negative coggins within current calendar year must be presented before unloading. Riders' age will be determined by the age/he/shes will be on 1/1/2009 - this is your new 4-H age. There is a \$3.00 horse/rider fee; \$3.00 per class fee; \$5.00 High Point. Non-speed events are during the first part of the day, with 7-8 classes available. Seven classes in the speed events will be held in the afternoon. There will be a gift item drawing for the CloverBuds as well.

Event is casual attire. Please join us rain or shine! Full details are available for pick up at the MSU Extension Office, 2300 East Grand River, Suite 111.

TEAM SORTING CLINIC October 26th at 1:00 p.m.

Learn the fundamentals of sorting cattle! All ages welcome, and no experience necessary. Draw pot format. Please call to register by October 19th. \$25.00 per person.

Blue Ridge Stock Farm
10613 N. Latson Road
(517) 548-6899

FREE TO GOOD HOME! A companion horse, 12 years old gelding, was a Reiner but injured. He is a great horse, and very sweet! If interested, call Bronwyn at 810-735-8601



2008 4-H Calendar of Events

Livingston County 4-H Schedule

October 2008

- 6 Award forms due from members
4-H Awards Committee Meeting
- 7 Market Livestock General Meeting
- 8 Small Animal General Meeting
- 13 4-H Council Meeting
- 27 Horse General Meeting

November

- 3 4-H Re-enrollment
- 4 4-H Market Livestock Committee
- 10 4-H Council
- 12 4-H Small Animal Committee
- 17 4-H Clothing and Textile Committee
- 24 4-H Horse Leaders Association

Committees and Council do not meet in December, July and August. All meetings are held in the East Complex 4-H meeting room at 7:30 p.m. unless otherwise noted.

MSU Pavilion Schedule

October

- 1 Standardbred Sale, 8 am - 8 pm
- 3-5 BHAM Futurity & All American Buckskin Congress
- 4 Michigan Angus Association Fall Sale
- 9-11 GL Haflinger Futurity, Show & Sale
- 12 MSU Livestock Judging Contest
- 16-19 MI Great Lakes Draft Horse Show & Pull
- 24-26 Paint Horse Show
- 31-11/2 ASHAM Horse Show

November

- 1 MSU Fallfest Beef Cattle Sale-SB
- 2 Autumn Showcase Polled Hereford Show
- 8 Autumnfest
- 9 MSU Horseman's Green & White Show
- 15 MSU Fallfest Beef Cattle Sale
- 15-16 S. MI Paint & QH Sale
- 21-23 MQHA Show
- 22-23 4-H Teen Horse Leaders Conference
- 22 Bred Ewe Sale

**For a complete calendar go to
www.pavilion.msu.edu**

KETTUNEN CENTER EVENT CALENDAR



OCTOBER

- 11 & 12 4-H Clothing & Textiles Volunteer Workshop
- 18-19 4-H Proud Equestrian Program Instructor Workshop
- 24-26 4-H Goat Teen & Adult Volunteer Leader Workshop
(registration deadline Thursday, Oct. 9)

NOVEMBER

- 1-2 4-H Visual Arts and Crafts Workshop
- 21-23 4-H Teen Horse Volunteer Leaders Conference

For a complete calendar and list of events, go to www.KettunenCenter.org

4-H Youth Development Day January 25, 1009

Hold Sunday, January 25, 2009 , for the fourth annual MSU Extension 4-H Youth Development Day at the Breslin Center, as we cheer on the MSU Spartan Women's Basketball team as they play the University of Wisconsin. The tentative game time is 2 p.m. at the MSU Breslin Center on the campus of Michigan State University. Admission will once again be free for MSU Extension, 4-H members, volunteers, families and staff. Watch the Cornerpost for more details.



Michigan State University Extension - Livingston County
2300 East Grand River Avenue, Suite 111
Howell, MI 48843

**NON PROFIT ORG
U.S. POSTAGE PAID
PERMIT #24
HOWELL MI 48843**

The 4-H Corner Post

Livingston County MSU Extension

Newsletter Information

If you have a meeting, announcement, special activity, news about your event, or need volunteers, etc., for the 4-H Corner Post, please mail, fax, e-mail or drop off to any Corner Post staff no earlier than three months and no later than the third week of the month, for publication in the next month's newsletter.

Please write clearly or type your information, and be sure to include your name and phone number for clarification. Thank you!

Michigan 4-H: 100 Years & Growing!



**MSU Extension
Livingston County**
2300 E. Grand River Ave.
Suite 111
Howell, MI 48843
Tel: (517) 546-3950
Fax: (517) 546-5154

www.co.livingston.mi.us/msuextension

Corner Post Staff

Roxanne Turner, 4-H/Youth Extension Educator
e-mail: turnerr@msu.edu

Teena Munsell, 4-H/Youth Program Associate
e-mail: tmunsell@co.livingston.mi.us

Kim White, Administrative Specialist
email: kwhite@co.livingston.mi.us

An affirmative action/equal opportunity institution. The information in The 4-H Corner Post is for educational purposes only. References to commercial products or trade names is made with no endorsement implied by MSU Extension-Livingston County. MSU Extension programs and materials are open to all without regard to race, color, national origin, sex, handicap, age or religion.