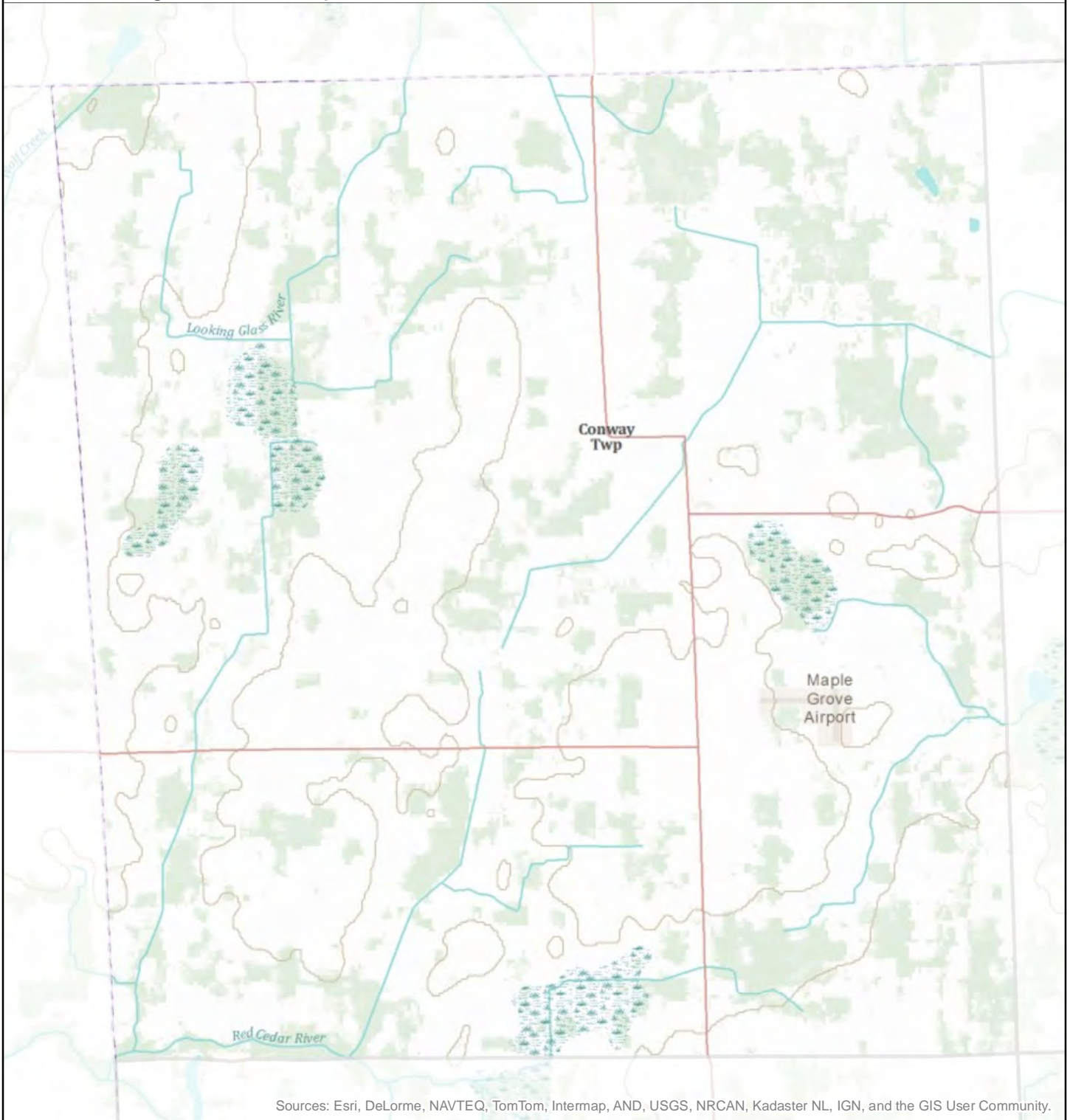


Census 2010 Map Book

Conway Township

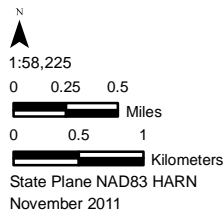
SEMCOG



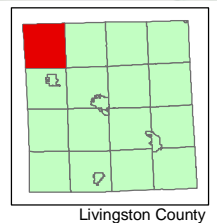
Sources: Esri, DeLorme, NAVTEQ, TomTom, Intermap, AND, USGS, NRCAN, Kadaster NL, IGN, and the GIS User Community.



Southeast Michigan Council of Governments
535 Griswold Street, Suite 300, Detroit, Michigan 48226
Phone (313) 961-4266, Fax (313) 961-4869
www.semco.org Copyright: SEMCOG, 2011



United States
Census 2010



About this map book

SEMCOG Community Map Books provide easy to understand, quick reference information in a format that is easily accessible, reproducible, and distributable.

The Census 2010 Community Map Book presents a graphic overview of selected demographic information from the 2010 Census of Population and Housing, including: total population, seniors, youth, housing, and residential vacancy. In addition, SEMCOG has developed a special Census Block Equivalency file to accurately map demographic change from 2000 to 2010.

To ask a question about this map book, email infocenter@semcog.org or call 313-324-3330.

Note on data accuracy

The maps depicting 2010 data are displayed using 2010 Census Blocks - the smallest unit of geographic area that the U.S. Census Bureau publishes its data. Mapping at smaller levels of geography is more precise; however, some inaccuracies in the data can become more apparent when mapping at this level of detail. The Census Bureau made additional effort to locate census results to the correct block in 2010; therefore, some increases or decreases in block data from 2000 to 2010 may actually represent a correction in locating addresses more accurately.

More information on SEMCOG initiatives

[Community Design](http://www.semcog.org/CommunityDesign.aspx) – <http://www.semcog.org/CommunityDesign.aspx>

[Data and Maps by Community](http://www.semcog.org/Data/bycommunity.cfm) – <http://www.semcog.org/Data/bycommunity.cfm>

[Development](http://www.semcog.org/Development.aspx) – <http://www.semcog.org/Development.aspx>

[Education](http://www.semcog.org/Education.aspx) – <http://www.semcog.org/Education.aspx>

[Employment](http://www.semcog.org/Employment.aspx) – <http://www.semcog.org/Employment.aspx>

[Grants](http://www.semcog.org/Grants.aspx) – <http://www.semcog.org/Grants.aspx>

[Housing](http://www.semcog.org/Housing.aspx) – <http://www.semcog.org/Housing.aspx>

[Interactive Data Map](http://www.semcog.org/Data/Maps/roads.map.cfm) – <http://www.semcog.org/Data/Maps/roads.map.cfm>

[Local Government Collaboration](http://www.semcog.org/Data/agilegov.cfm) – <http://www.semcog.org/Data/agilegov.cfm>

[Local Government Efficiency](http://www.semcog.org/LGECEfficiency.aspx) – <http://www.semcog.org/LGECEfficiency.aspx>

[Low Impact Development](http://www.semcog.org/Data/lid.cfm) – <http://www.semcog.org/Data/lid.cfm>

[Map Catalog](http://www.semcog.org/MapCatalog.aspx) – <http://www.semcog.org/MapCatalog.aspx>

[Population](http://www.semcog.org/Population.aspx) – <http://www.semcog.org/Population.aspx>

[Sustainability](http://www.semcog.org/Sustainability.aspx) – <http://www.semcog.org/Sustainability.aspx>

[Work Force Development](http://library.semcog.org/InmagicGenie/Document/WorkforceDevelopmentReport.pdf) – <http://library.semcog.org/InmagicGenie/Document/WorkforceDevelopmentReport.pdf>

Table of Contents

- Map 1 - Aerial Imagery, 2010
- Map 2 - Neighborhood Stability, 2000-2010
- Map 3 - Population Density, 2010
- Map 4 - Population Change, 2000-2010
- Map 5 - Senior Population, 2010
- Map 6 - Senior Population Change, 2000-2010
- Map 7 - Youth Population, 2010
- Map 8 - Youth Population Change, 2000-2010
- Map 9 - Housing Density, 2010
- Map 10 - Housing Change, 2000-2010
- Map 11 - Residential Vacancy Rate, 2010
- Map 12 - Vacancy Rate Change, 2000-2010

Aerial Imagery, 2010

Conway Township

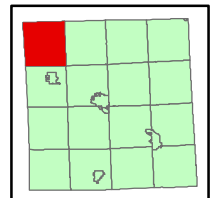
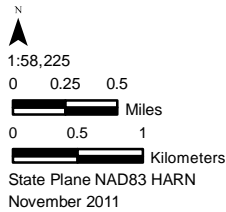
Map 1



Source: SEMCOG



Southeast Michigan Council of Governments
535 Griswold Street, Suite 300, Detroit, Michigan 48226
Phone (313) 961-4266, Fax (313) 961-4869
www.semco.org Copyright: SEMCOG, 2011



Livingston County

Neighborhood Stability, 2000-2010

Conway Township

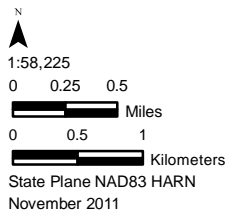


Note: "No change to slight decline" represents a decrease of 2.0 or less persons per acre and a percentage point increase of 10% or less in housing vacancy. "Larger decline" represents a decrease of more than 2.0 persons per acre and a percentage point increase of more than 10% in housing vacancy.

Sources: SEMCOG and U.S. Census Bureau.

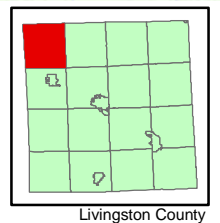


Southeast Michigan Council of Governments
 535 Griswold Street, Suite 300, Detroit, Michigan 48226
 Phone (313) 961-4266, Fax (313) 961-4869
 www.semco.org Copyright: SEMCOG, 2011



Neighborhood Stability by Census Block Equivalents

- Lower vacancy rate and more persons
- Lower vacancy rate
- More persons
- No change to slight decline
- Larger decline
- Not populated or no housing units



Population Density, 2010

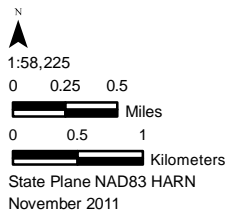
Conway Township



Sources: SEMCOG and U.S. Census Bureau.



Southeast Michigan Council of Governments
 535 Griswold Street, Suite 300, Detroit, Michigan 48226
 Phone (313) 961-4266, Fax (313) 961-4869
www.semco.org Copyright: SEMCOG, 2011

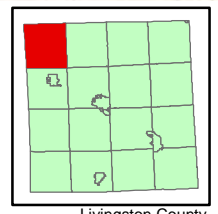


Persons per Acre by Census Block

- Less than 2.0
- 2.0 to 4.9
- 5.0 to 9.9
- 10.0 to 15.0
- More than 15.0

Not populated

Population per Block



Population Change, 2000-2010

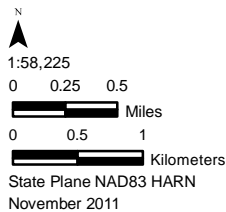
Conway Township



Sources: SEMCOG and U.S. Census Bureau.

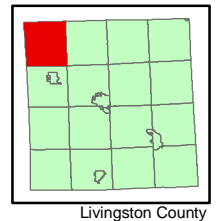


Southeast Michigan Council of Governments
 535 Griswold Street, Suite 300, Detroit, Michigan 48226
 Phone (313) 961-4266, Fax (313) 961-4869
 www.semco.org Copyright: SEMCOG, 2011



Change in Persons per Acre by Census Block Equivalents

- More than 5.0 Gain
- 2.1 to 5.0
- 2.0 to 2.0
- 2.1 to -5.0
- More than 5.0 Loss
- Not populated
- Population Change per Block



Senior Population, 2010

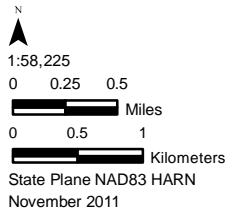
Conway Township



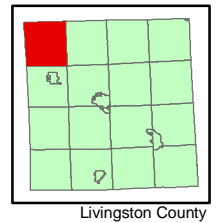
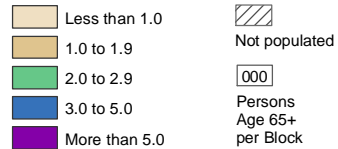
Sources: SEMCOG and U.S. Census Bureau.



Southeast Michigan Council of Governments
 535 Griswold Street, Suite 300, Detroit, Michigan 48226
 Phone (313) 961-4266, Fax (313) 961-4869
www.semco.org Copyright: SEMCOG, 2011



Persons Age 65+ per Acre by Census Block



Senior Population Change, 2000-2010

Conway Township

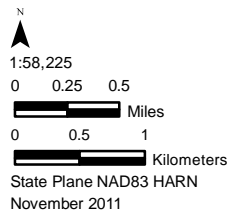
Map 6



Sources: SEMCOG and U.S. Census Bureau.

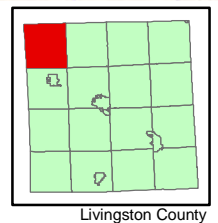


Southeast Michigan Council of Governments
 535 Griswold Street, Suite 300, Detroit, Michigan 48226
 Phone (313) 961-4266, Fax (313) 961-4869
 www.semco.org Copyright: SEMCOG, 2011



Change in Persons Age 65+ per Acre by Census Block Equivalents

- More than 2.0 Gain
- 1.1 to 2.0
- 1.0 to 1.0
- 1.1 to -2.0
- More than 2.0 Loss
- Not populated
- Change in Persons Age 65+ per Block



Youth Population, 2010

Conway Township

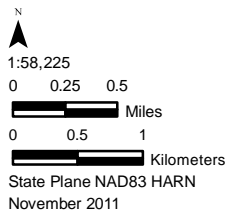
Map 7



Sources: SEMCOG and U.S. Census Bureau.

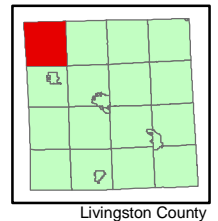


Southeast Michigan Council of Governments
 535 Griswold Street, Suite 300, Detroit, Michigan 48226
 Phone (313) 961-4266, Fax (313) 961-4869
 www.semco.org Copyright: SEMCOG, 2011



Persons Age 0-17 per Acre by Census Block

- Less than 1.0
- 1.0 to 1.9
- 2.0 to 2.9
- 3.0 to 5.0
- More than 5.0
- Not populated
- Persons Age 0-17 per Block



Youth Population Change, 2000-2010

Conway Township

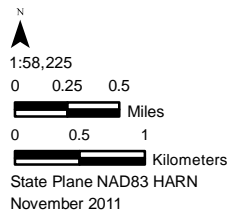
Map 8



Sources: SEMCOG and U.S. Census Bureau.

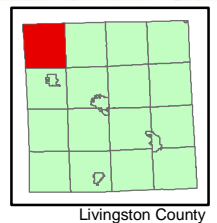


Southeast Michigan Council of Governments
 535 Griswold Street, Suite 300, Detroit, Michigan 48226
 Phone (313) 961-4266, Fax (313) 961-4869
 www.semco.org Copyright: SEMCOG, 2011



Change in Persons Age 0-17 per Acre by Census Block Equivalents

- More than 3.0 Gain
- 1.1 to 3.0
- 1.0 to 1.0
- 1.1 to -3.0
- More than 3.0 Loss
- Not populated
- Change in Persons Age 0-17 per Block



Housing Density, 2010

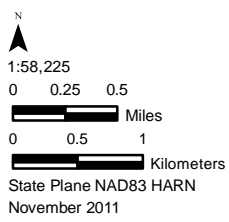
Conway Township



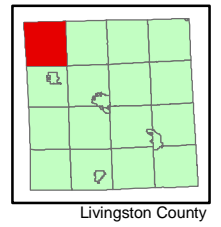
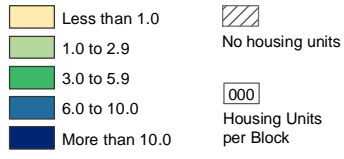
Sources: SEMCOG and U.S. Census Bureau.



Southeast Michigan Council of Governments
 535 Griswold Street, Suite 300, Detroit, Michigan 48226
 Phone (313) 961-4266, Fax (313) 961-4869
 www.semco.org Copyright: SEMCOG, 2011



Housing Units per Acre by Census Block



Housing Change, 2000-2010

Conway Township

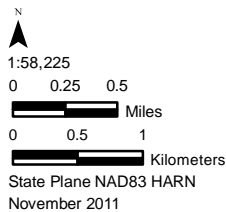
Map 10



Sources: SEMCOG and U.S. Census Bureau

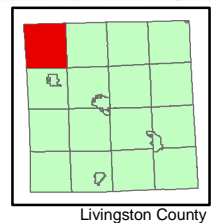


Southeast Michigan Council of Governments
 535 Griswold Street, Suite 300, Detroit, Michigan 48226
 Phone (313) 961-4266, Fax (313) 961-4869
 www.semco.org Copyright: SEMCOG, 2011



Change in Housing Units per Acre by Census Block Equivalents

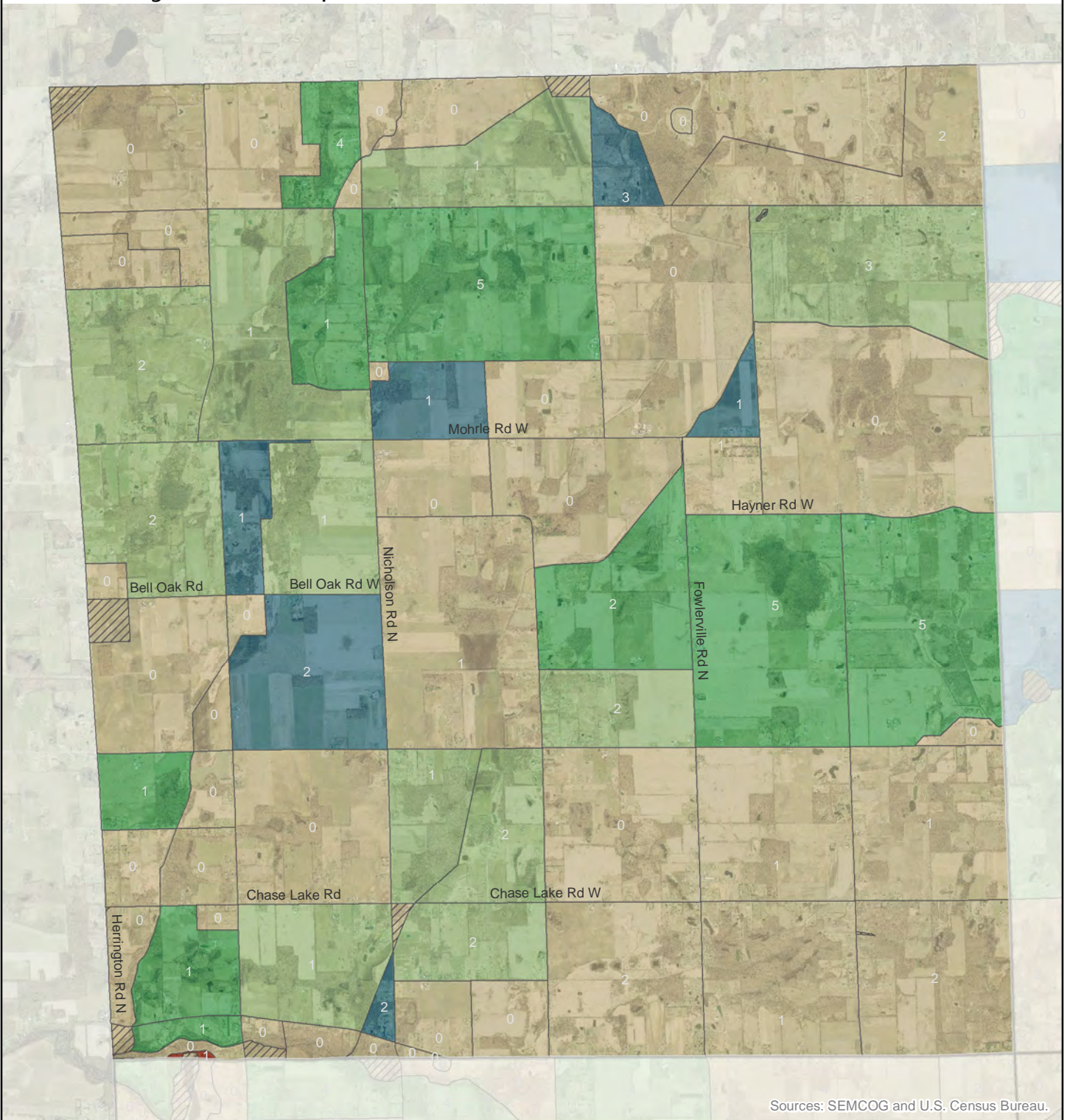
- More than 3.0 Gain
- 1.1 to 3.0
- 1.0 to -1.0
- 1.1 to -3.0
- More than 3.0 Loss
- No housing units
- Change in Housing Units per Block



Residential Vacancy Rate, 2010

Conway Township

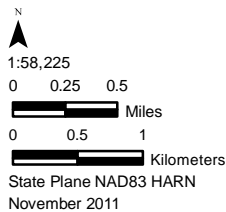
Map 11



Sources: SEMCOG and U.S. Census Bureau.



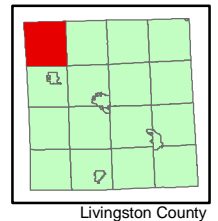
Southeast Michigan Council of Governments
 535 Griswold Street, Suite 300, Detroit, Michigan 48226
 Phone (313) 961-4266, Fax (313) 961-4869
 www.semco.org Copyright: SEMCOG, 2011



Residential Vacancy Rate by Census Block

- Less than 5%
- 5.0 to 9.9%
- 10.0 to 19.9%
- 20.0 to 50.0%
- More than 50.0%

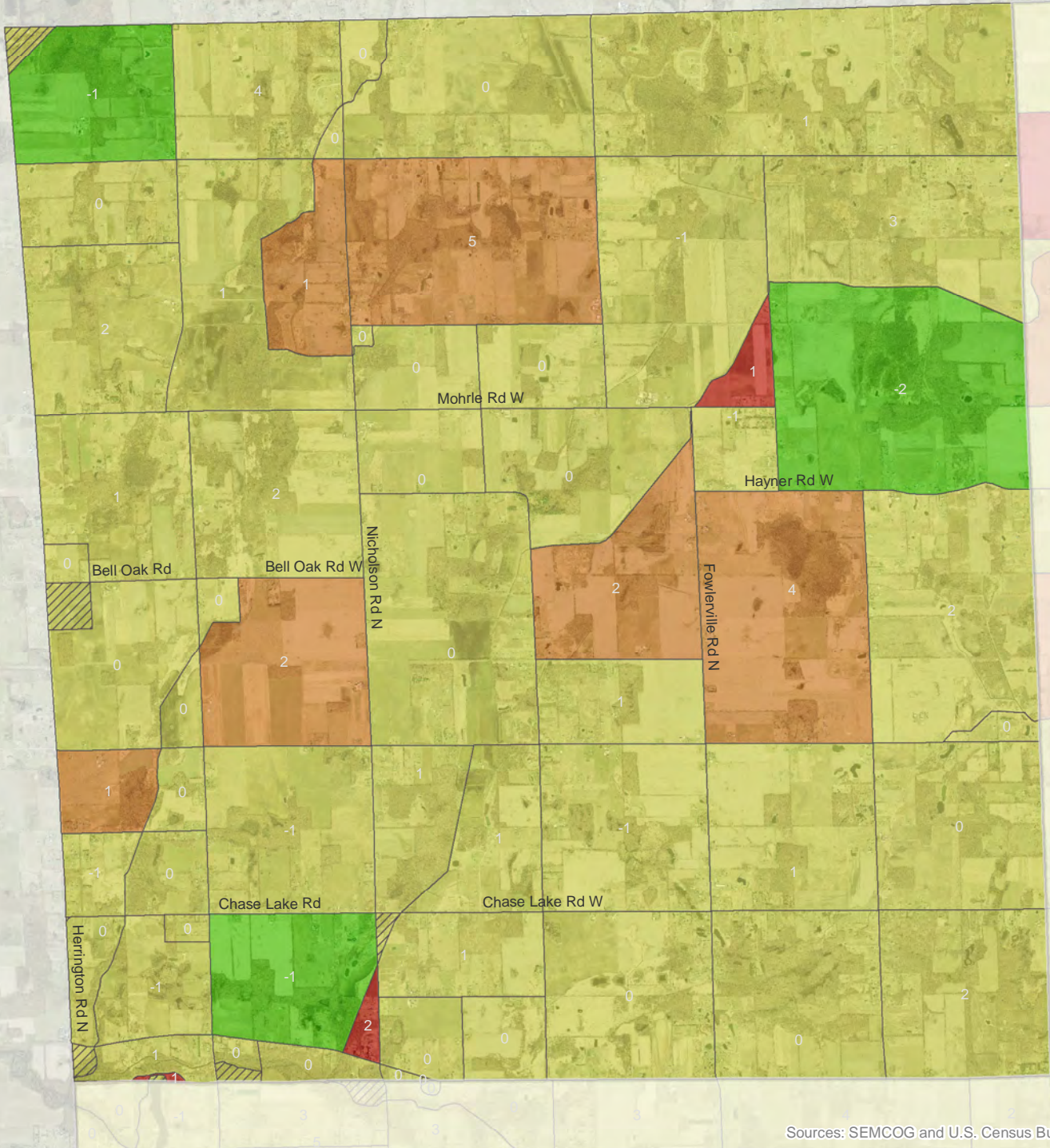
- No housing units
- Vacant Units per Block



Vacancy Rate Change, 2000-2010

Conway Township

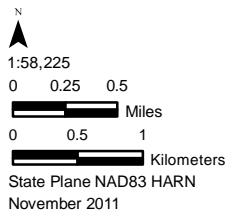
Map 12



Sources: SEMCOG and U.S. Census Bureau.



Southeast Michigan Council of Governments
 535 Griswold Street, Suite 300, Detroit, Michigan 48226
 Phone (313) 961-4266, Fax (313) 961-4869
 www.semco.org Copyright: SEMCOG, 2011



Change in Vacancy Rate by Census Block Equivalents

- More than 20% decrease
- Decrease of 10 to 20%
- Less than 10% change
- Increase of 10 to 20%
- More than 20% increase
- No housing units
- 000 Change in Vacant Units per Block

